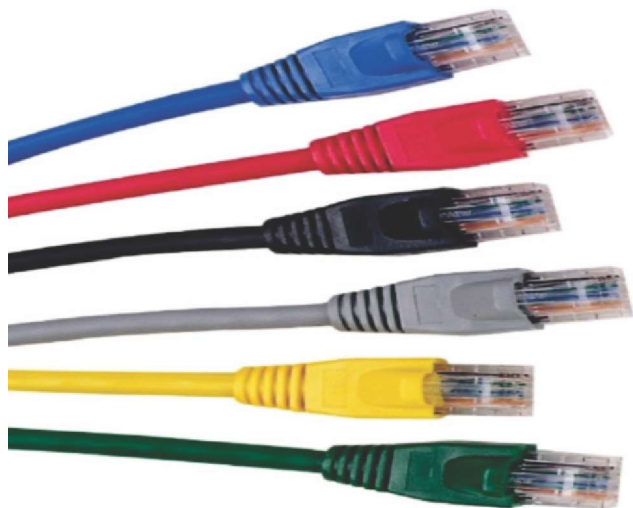


# Copper Structured Cabling Solutions

## Category 6 Patch Cord

Global **SIX**

## Cat6 UTP Patch Cord



### 100% Continuity Tested

- 100% Performance tested for wire map, return loss and NEXT.
- Confident that each patch cord delivers specified performance

### Applications

- Cat6 UTP Copper Patch Cord is a component of the GlobalSIX Structured Cabling System. This end-to-end system which is interoperable and backwards-compatible is designed with flexibility to protect network investments well into the future.
- ISO 11801 Class E, ANSI/TIA-568-C.2 Cat6 Standards is ideal for today's high performance equipment and workstations
- Ethernet 10BASE-T, 100BASE-T(Fast Ethernet), 1000BASE-T (Gigabit Ethernet), 10GBASE-T (10 Gigabit Ethernet over limited distance as specified in the industry standards of 10GBASE-T)
- 155Mb/s ATM, 622Mb/s ATM, 1.2Gb/s ATM
- Token Ring 4/16
- Digital Video & Broadband/Baseband Analogue Video
- Voice over Internet Protocol

### Mechanical

- Total Contact Force » 800 Grams
- Contact Resistance » 20Ω Max
- Retention » 50N
- Insertion/Extraction » 1200 Cycles

### Electrical Characteristics

- Insulation Resistance » 500MΩ min @ 100V d.c
- Dielectric Voltage » 1000V d.c
- Contact Resistance » 20MΩ Max

### Specifications

Cable Construction » Cat6 UTP Stranded Bare Copper

Conductor » 8 Copper wires 24 AWG

Insulation » High Density polyethylene

Cable Diameter » 6.0mm±0.2mm

Plug » Cat6 Unbreakable UTP Plug with 3 prongs, clear colour .  
Flash Plating, 8P8C, UL94-V2

Molded Boot Material » Fire Retardant PVC Compounds

Fire Resistant » CM - PVC, LSZH - IEC603332-1

Cross Divider » Optimizes Performance & Consistency by  
Reducing Untwist at Plug

RoHS Compliance » Compliant

POE+ Compliance » Compliant

### Part Number

G6PC-C6UXXYY-C

Patch Cord Cat6 UTP

XX - length: 0.5m, 1m, 1.5m, 2m, 3m, 5m, 10m

YY - Colour: BK, BL, GN, GY, OR, RD, YL, VL